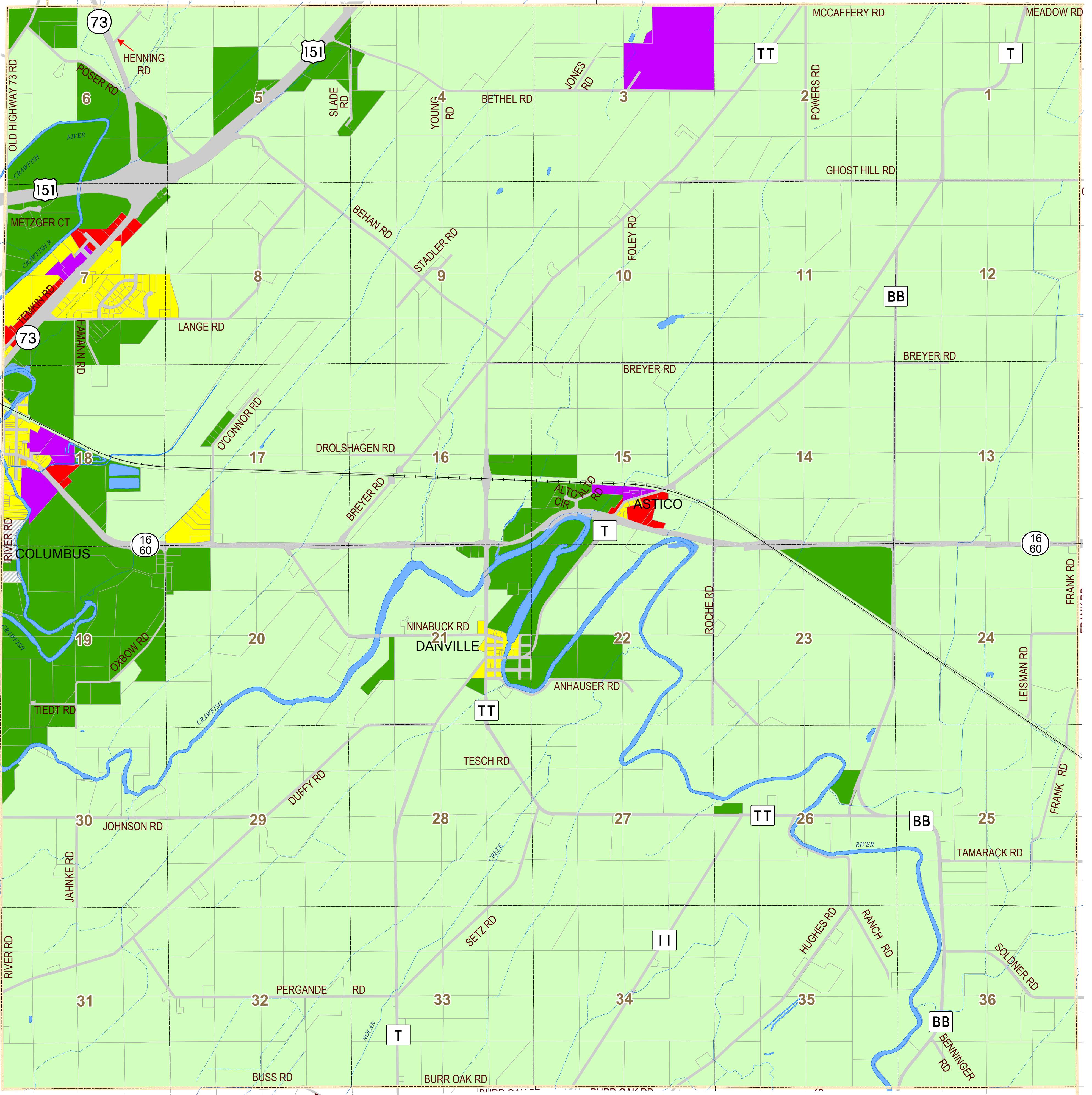


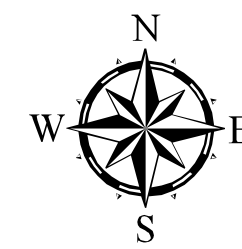
# Farmland Preservation Zoning Map Town of Elba, Dodge County, Wisconsin



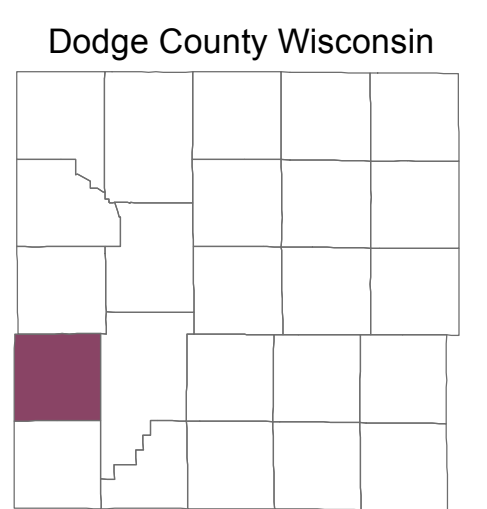
- Legend**
- State Highway
  - County Highway
  - Town Road
  - Railroad
  - Town Boundary
  - Tax Parcel Boundary
  - Section Line
  - River or Stream
  - Intermittent Stream

- Zoning**
- A-1 Farmland Preservation
  - A-2 General Agricultural
  - R-1 Single Family Residential
  - R-2 General Residential
  - C-1 Commercial
  - I-1 Industrial
  - City or Village
  - Right-Of-Way
  - Waterbody

**THIS IS TO CERTIFY THAT THIS MAP IS A CERTIFIED COPY OF THE OFFICIAL ZONING MAP ADOPTED AND APPROVED WITH THE ZONING ORDINANCE, TOWN OF ELBA, DODGE COUNTY, WISCONSIN ON December 20, 2010 BY THE TOWN BOARD OF THE TOWN OF ELBA. (COUNTY BOARD APPROVED February 16, 2011)**



Dodge County  
Land Resources and Parks  
Department



Source: Dodge County Land Resources and Parks Department, August 2014  
Original Map Approved: December 2010  
Zoning Updated: July 2012

0      1,500      3,000      6,000 Feet